

# To Hold Big Exposition

Arrangements Being Made for Second Annual Exhibition by New Haven Business Men's Association.

Activity on every side marks the preparations which are being made for the second annual exposition which is to be held under the auspices of the New Haven Business Men's association at the State Armory on Meadow street, beginning on Thursday, October 12, and continuing until Saturday, October 21, inclusive. The success of the one given in February led the association to arrange for the second one, and although it is yet early, there is every reason to believe that the second will be far in advance of the first. The armory has been secured again this season, and with a floor space of one hundred by two hundred feet, there is ample accommodation for the booths. The floor space will be laid out this year practically the same as last, the booths lining both sides and the ends of the room, and two rows through the center. As there is every reason to believe that there will be more exhibitors than in February, the plan calls for more booths than last year, there being seventy-eight in all. Eight of these in the center of the building are

year. Already a number of spaces have been spoken for by out-of-town manufacturers, more in fact, than in February, and everything points to as many, if not more, New Haven merchants taking spaces. It is also expected that there will be more food exhibits, and more samples given out, and as a drawing card for the housekeepers, a class of people which the food exhibitors are anxious to get in touch with, a series of cooking lectures are being considered by the committee, to be given in the afternoon.

There is to be something provided in the way of entertainment each afternoon and evening, but what it will be has not as yet been decided upon.

The attendance during the seven days last year was 39,440, and with nine days this year, it is estimated that there will be probably be 50,000. Coupon tickets are also to be distributed, thus cutting the admission fee almost in half.

A special feature is to be the display of office fixtures and appliances. Special exhibitions along this line have been given in Madison Square Garden,

this fall an exhibit that will, in all probabilities, far surpass that of last year which was arranged by the company.

Welch's Grape Fruit will have an exhibit at either end of the floor, and Modox and the Worcester Salt Company have secured spaces. D. S. Gihuly, the local bottler, has taken a large space. The indications now are that by the middle of September there will be little, if any, space left for sale.

## THE FALL FAIRS.

### BRANFORD TO LEAD OFF WITH A SIX DAYS' SHOW.

Trotting Races, Bicycle Races, Automobile Parade—Day and Night Events—Brilliant Illumination.

The Branford fair, which has come to be one of the largest of its kind held in this vicinity, will take place at the Hippodrome Park, formerly the Branford Driving Park, from Septem-

been listed. The exhibit of domestic animals promises to surpass that of other years, and a large number of prizes have been offered.

Judging from past years it is anticipated that there will be a large attendance. Special trains will leave this city each day at 9.30 and 11.30 a. m., 1, 1.15, 7 and 7.15 p. m. There will also be two each day from Saybrook Junction at 10.35 a. m. and 12.42 p. m.

\* \* \*

### The Orange Fair.

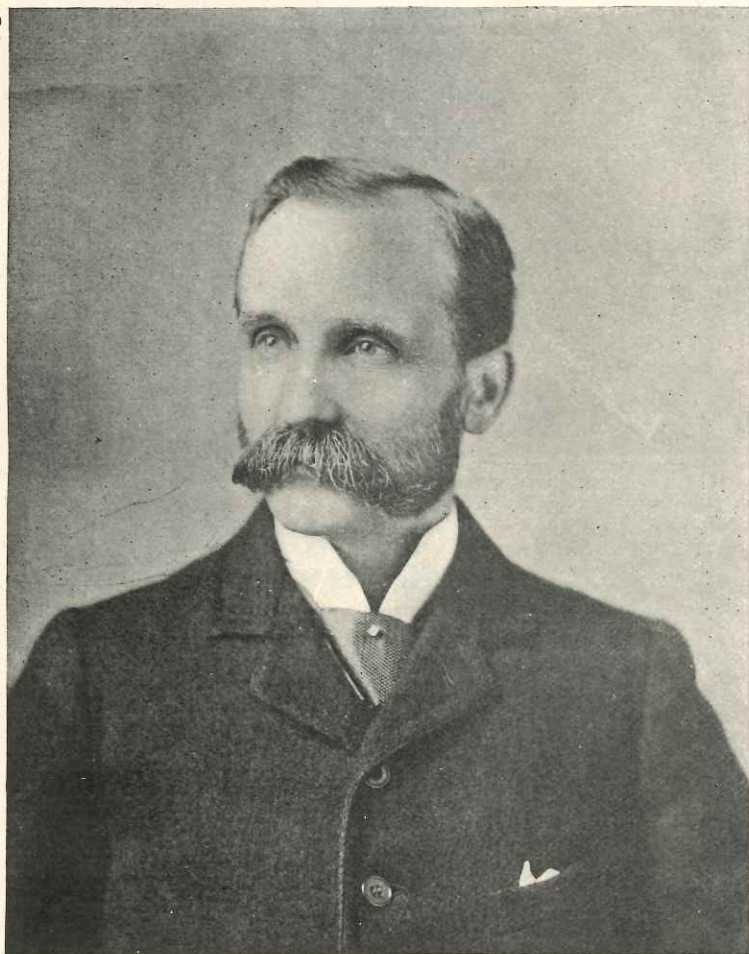
The dates for the annual fair of the town of Orange have been set as September 4 and 5, and elaborate preparations are being made for the event. There is to be the usual floral parade each afternoon at 1.45 o'clock of decorated carriages, wagons, floats, and the like, and the following purses have been made up for the races:

For Monday, September 4th—3-minute class, purse \$150; free-for-all, \$300; running horse race, half mile heat, \$40.

For Tuesday, September 5th—2.40 class, purse \$150; 2.24 class, purse \$250; running horse race, 1 mile heats, \$60.

There will be the usual exhibits, and Mr. Wilson H. Lee, the owner of Fairlea farm, is to have a larger and better exhibit than ever of thoroughbred Jersey stock.

The fair grounds are in excellent



PRESIDENT S. E. DIBBLE.



SECRETARY F. J. LINSLEY.

in clusters of four each, thus making it possible for a manufacturer desiring more room to have an entire section. Another means of providing more booths is that the Southern New England Telephone Company will, in all probability, not have the immense space which it did last year.

The exhibition is under the management this year of Messrs C. H. Green and E. J. Rowe, indoor advertisers, of New York, who are making a specialty of such expositions, and are now arranging for a circuit of ten similar affairs in the principal cities of the east, one to be opened in Washington, D. C., the day that Congress opens. In this way many of the large manufacturers from other cities send their exhibit from one city to another, thus giving New Haven the advantage of many exhibitions which might not otherwise come here.

The high class of the exhibits last year was a strong point toward the success of the whole affair. In many cases it will be found that a large number of the exhibits are fakirs and not legitimate manufacturers, that it hurts the tone of the whole exhibition. Everything last year was of a first class order, and it will be the effort of the members of the committee this year to follow the example of last

Boston, Chicago and Cincinnati, and a second one is being contemplated in New York. While one devoted entirely to office fixtures could not be given here, it will, nevertheless, be a large feature of the October exhibit.

The members of the committee in charge of the exhibit are as follows:

Executive Committee—S. E. Dibble, chairman; F. J. Linsley, S. S. Adams, R. C. Lightbourn, George D. Post, E. I. Atwater and John R. Booth.

Merchants and Manufacturers' Committee—R. C. Lightbourn, chairman; R. S. Pagter, H. W. Kelley, L. A. Mansfield, J. D. Beecher.

Food Committee—S. S. Adams, chairman; F. B. Street, S. H. Read, E. M. Somers, A. Felton Wood, J. Wesley Platt.

The letting of contracts for space has already begun, and a number of exhibitors at the February Exposition have reengaged their space. Others hold options on their space, and in a number of instances the contracts will be concluded when the advertising managers, now on vacations, return to their work.

Howe & Company, confectioners, who had such an elaborate and beautiful exhibit last year, have again taken the same space, and will have

ber first to sixth inclusive, both day and evening, and specialties for the various days have been arranged as follows: First and second days, national championship bicycle races; third day (Labor Day), trotting and pacing races in the afternoon and running races in the evening; fourth day, automobile day, various contests, with illuminated parade at night; fifth day, Elks' day, also trotting and running races; September 4, 5, and 6, Japanese nights, grand illumination. There will also be racing each night.

The park has been put in excellent condition, and special arrangements have been made for the evening events in the way of lighting facilities and the like. The last three evenings, which are known as Japanese nights, will undoubtedly be among the best of the week. The Elks' day is also a new departure in fairs of this order. There is also to be a vaudeville and balloon ascension, day and evening of each day. The exhibits are to be open at all times and there will be concerts, day and night, by the Second Regiment Band.

In the agricultural department a large number of prizes have been offered, for between twenty-five and thirty classes of vegetables, also a number of special premiums have

condition and a new covered grand stand has recently been erected.

\* \* \*

### The Guilford Fair.

The annual Guilford fair will be held this year under the auspices of the Guilford Agricultural society on Wednesday, September 27. Elaborate arrangements are being made for the event, and it is expected that it will surpass those of previous years. There will also be the parade of decorated carriages which was such an attraction last season.

### An Up-to-Date Angel.

She sat beside her nurse on the park bench, swinging her doll by one arm and turning an angelic face confidently up to the passers-by, none of whom passed her without a second glance.

"Isn't she a perfect little seraph?" exclaimed one lady as her eyes dwelt admiringly on the child's golden curls and eyes of heaven's own blue. "But aren't you afraid you'll hurt dolly, dear?" she added, pointing to the battered plaything, whose head was being beaten to a pulp against the bench.

With a sweet smile the seraph replied:

"It's my doll; it ain't up to you to butt in."